

Attachment A1-2

Supplementary Photographic Documentation

NOTE: Part 1 of Study 1 contains a photographic record of edge print from the Zapruder "In-Camera" original film. It important that the reader of this Study be aware that all of the identified manufacturing edge print can also be seen in the perforation area of selected frames of the Zapruder original film published as exhibit 885 of the *HEARINGS Before the President's Commission on the Assassination of President Kennedy*, Executive Order 11130 and S.J. Res. 137, 88th Congress, Volume XVIII.

The exhibits that apply are:

Zapruder Film Frame Number	Page Number	Edge Print
173	2	part of KADACHROME II
171 and 172	1	part of KADACHROME II
301 and 302	64	part of KADACHROME II
299 and 300	63	part of KADACHROME II
295 and 296	61	date code
234	30	Machine Number
233	30	Strip Number
294	60	S*AFETY FILM

Copies of the identified pages follow.

INVESTIGATION OF
THE ASSASSINATION OF PRESIDENT JOHN F. KENNEDY

HEARINGS
Before the President's Commission
on the Assassination
of President Kennedy

PURSUANT TO EXECUTIVE ORDER 11130, an Executive order creating a Commission to ascertain, evaluate, and report upon the facts relating to the assassination of the late President John F. Kennedy and the subsequent violent death of the man charged with the assassination and S.J. RES. 137, 88TH CONGRESS, a concurrent resolution conferring upon the Commission the power to administer oaths and affirmations, examine witnesses, receive evidence, and issue subpoenas

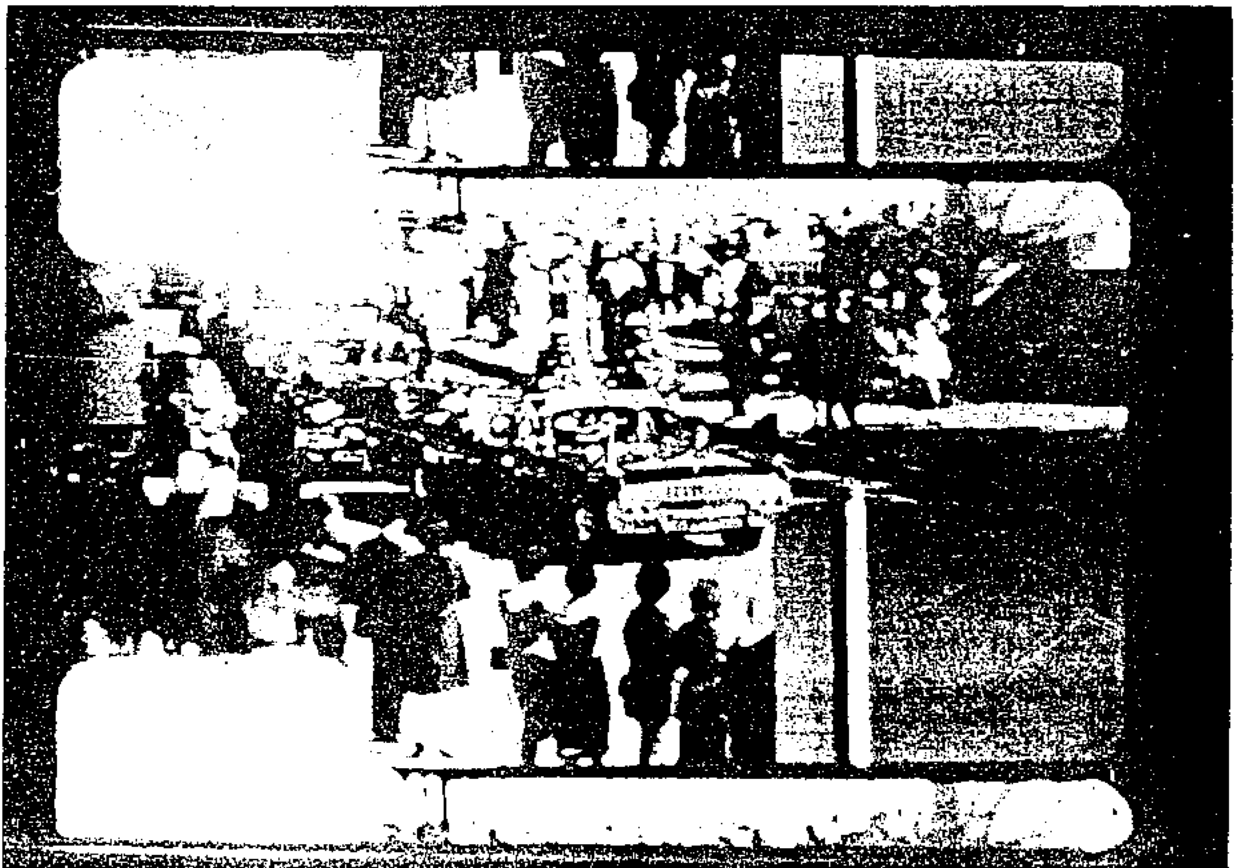
EXHIBITS
885 TO 1053

Volume
XVIII

UNITED STATES GOVERNMENT PRINTING OFFICE
WASHINGTON, D.C.

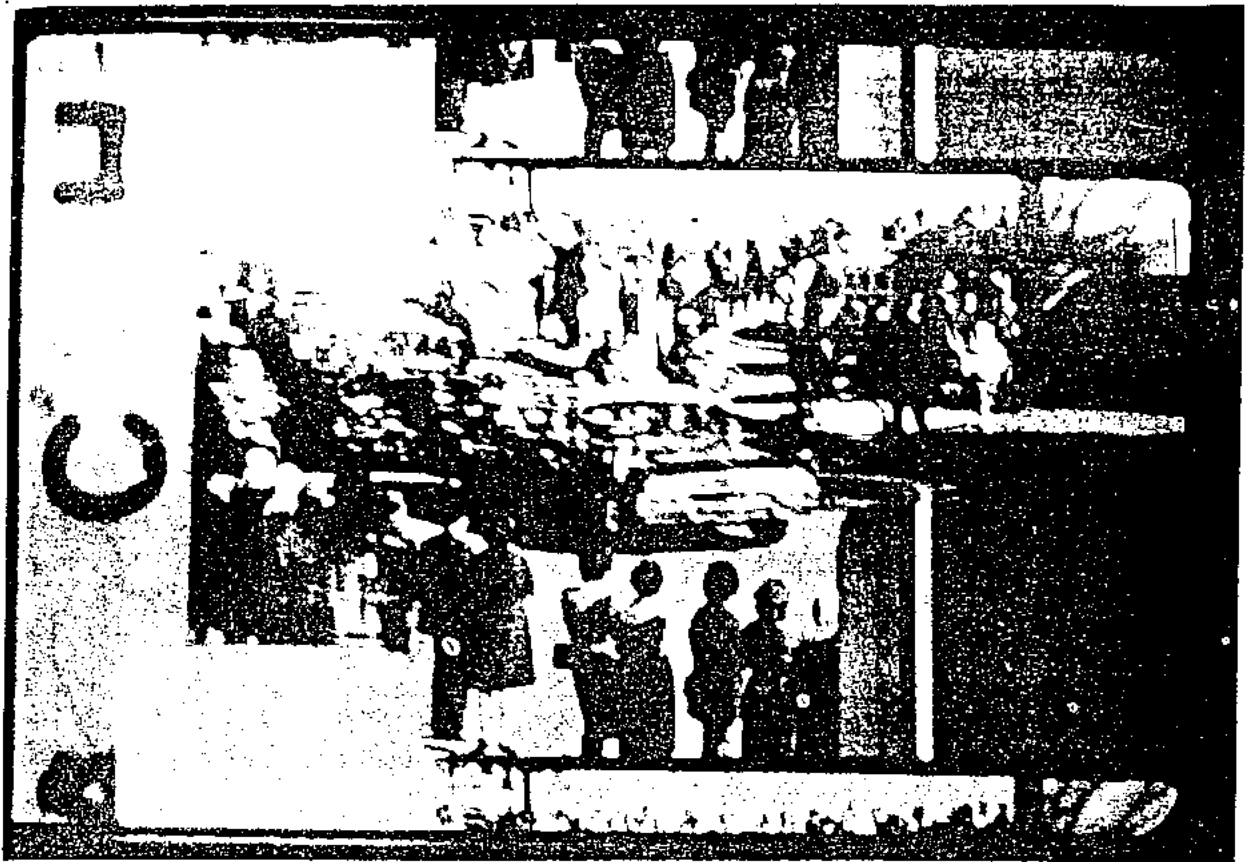


ZAPRUDER FILM--FRAME 173

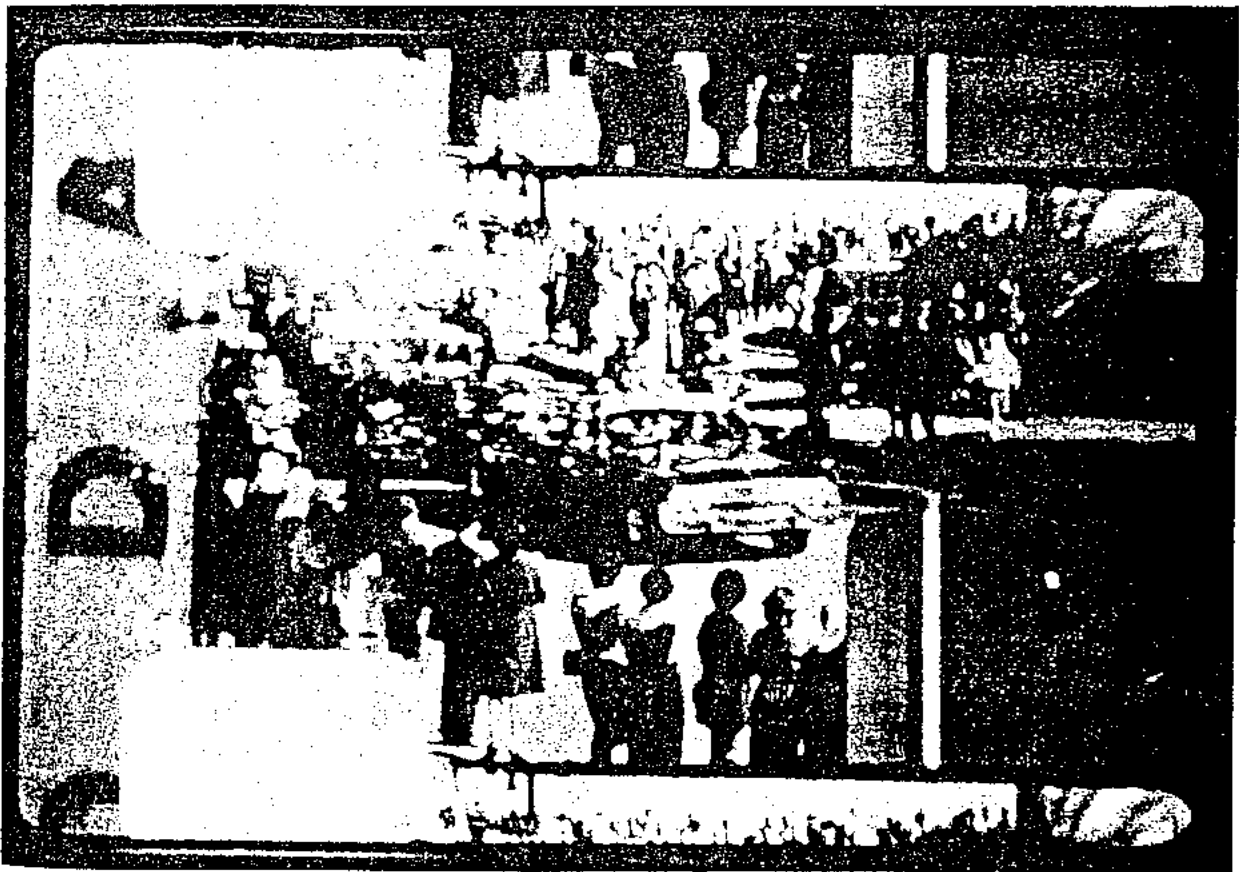


ZAPRUDER FILM--FRAME 174

COMMISSION EXHIBIT 885--Continued

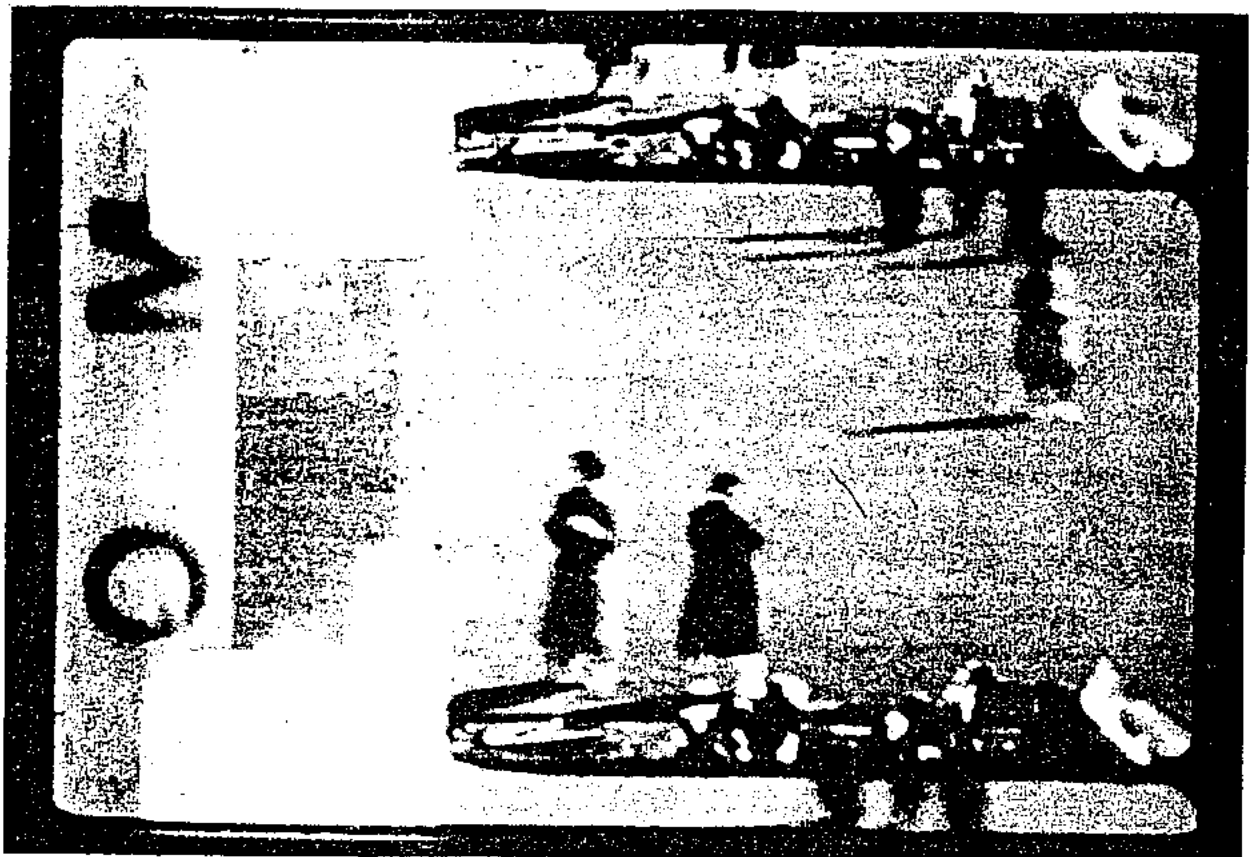


ZAPRUDER FILM—FRAME 171



ZAPRUDER FILM—FRAME 172

COMMISSION EXHIBIT 885

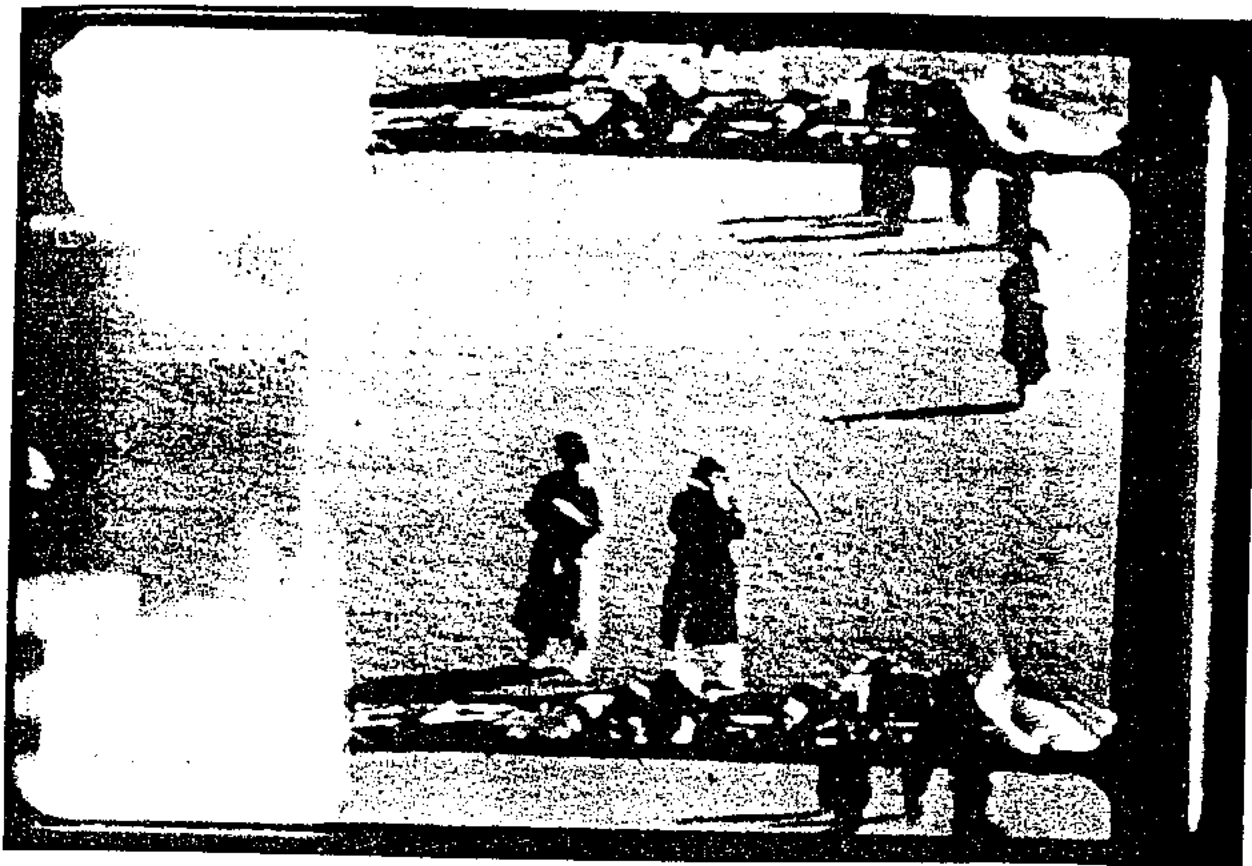


ZAPRUDER FILM—FRAME 301



ZAPRUDER FILM—FRAME 302

COMMISSION EXHIBIT 885—Continued



ZAPRUDER FILM—FRAME 299

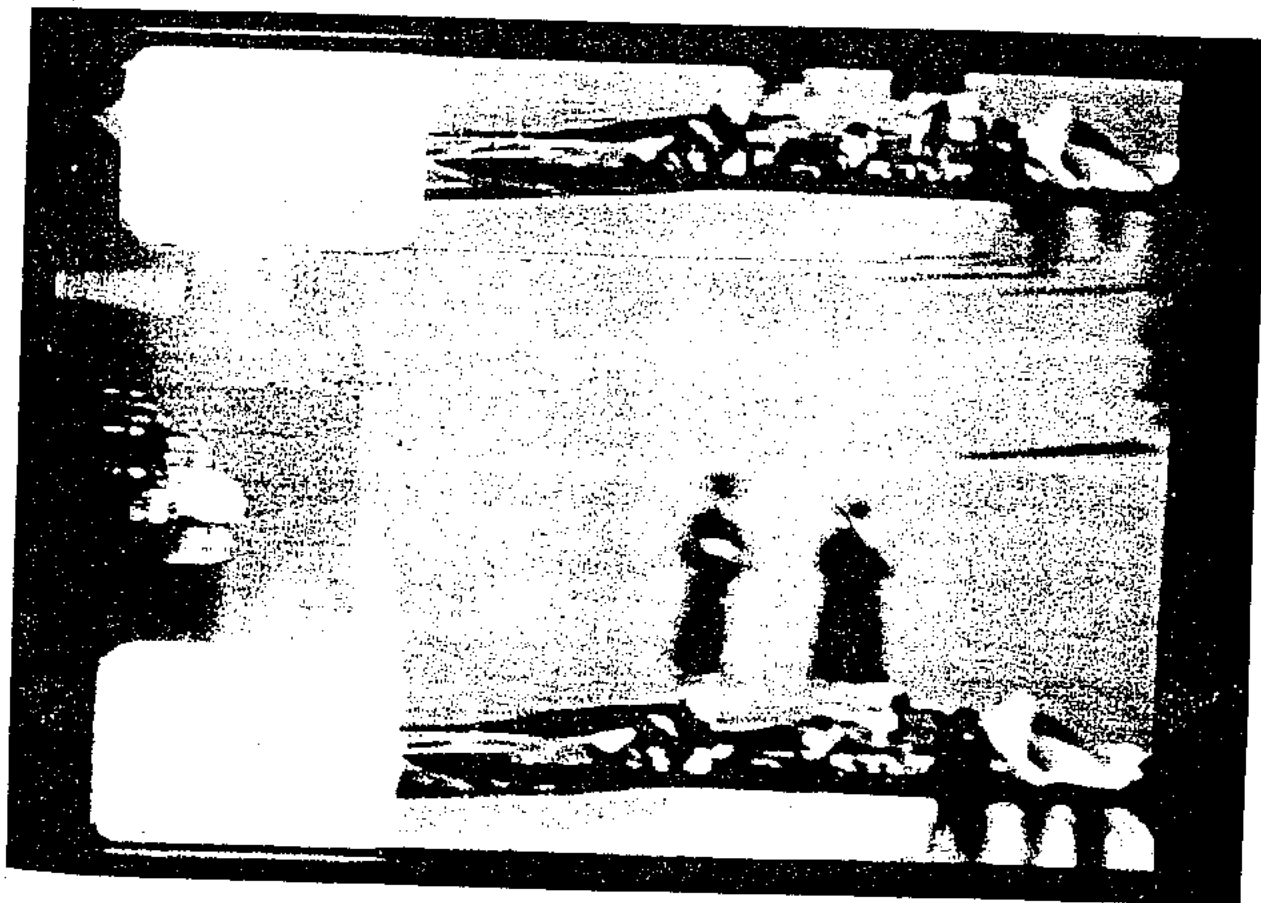


ZAPRUDER FILM—FRAME 300

COMMISSION EXHIBIT 885—Continued

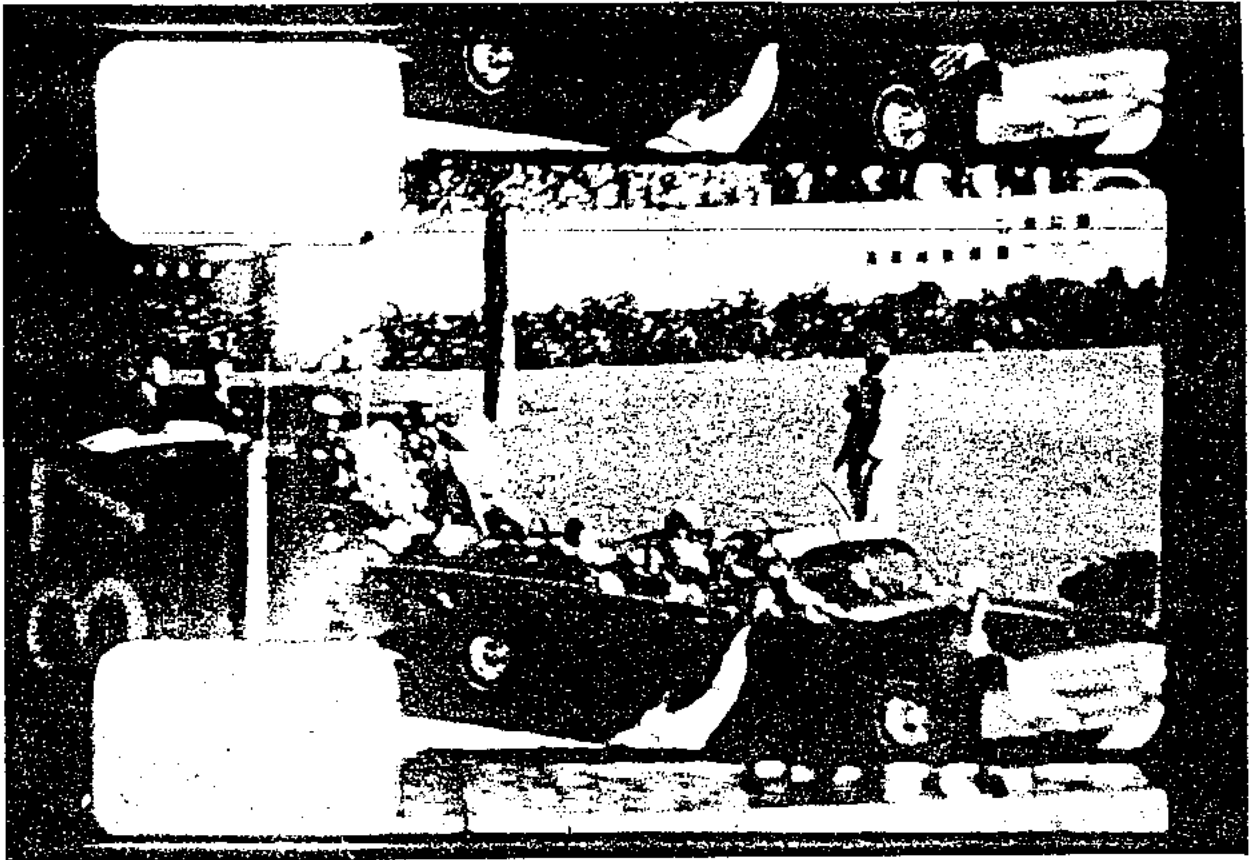


ZAPRUDER FILM—FRAME 295

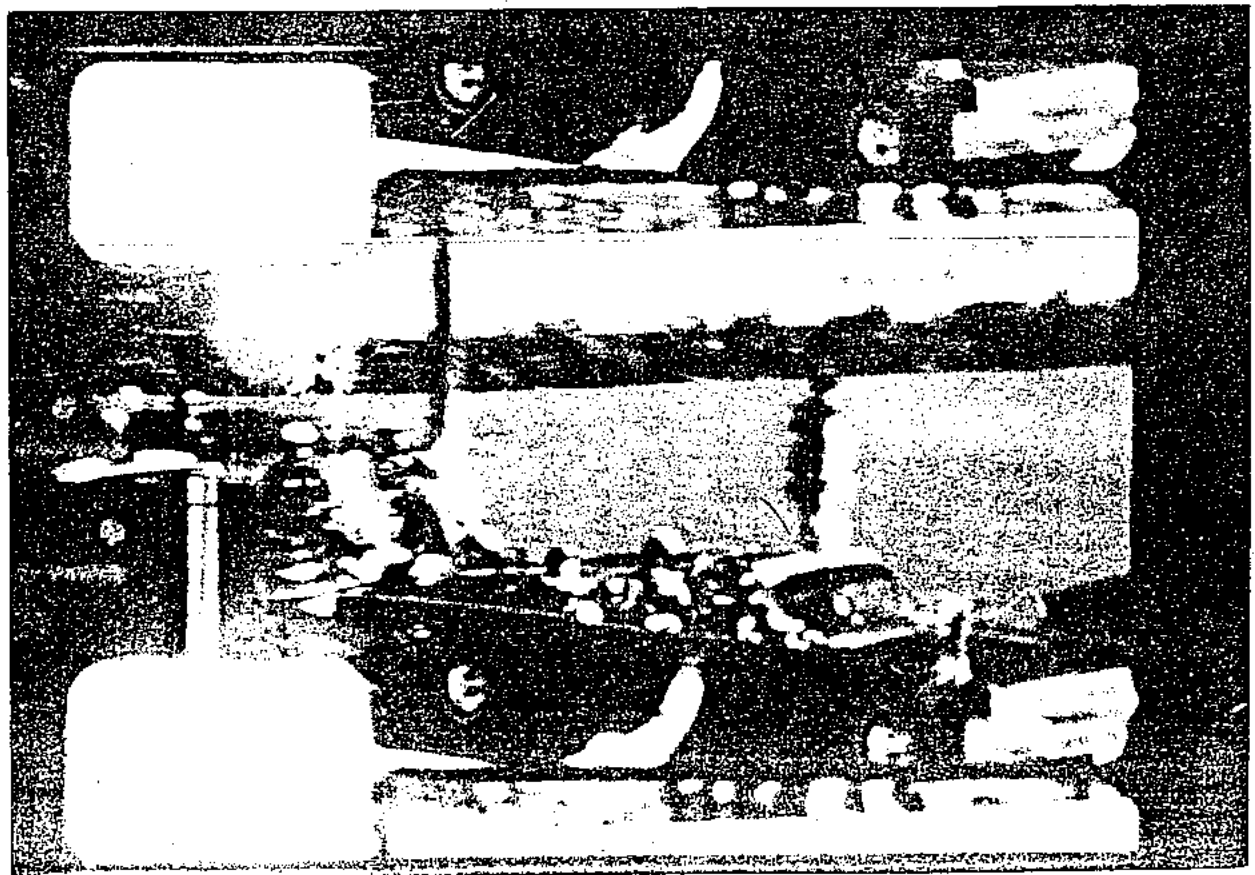


ZAPRUDER FILM—FRAME 296

COMMISSION EXHIBIT 885—Continued



ZAPRUDER FILM—FRAME 233



ZAPRUDER FILM—FRAME 234

COMMISSION EXHIBIT SS5—Continued



ZAPRUDER FILM—FRAME 293



ZAPRUDER FILM—FRAME 294

COMMISSION EXHIBIT 885—Continued